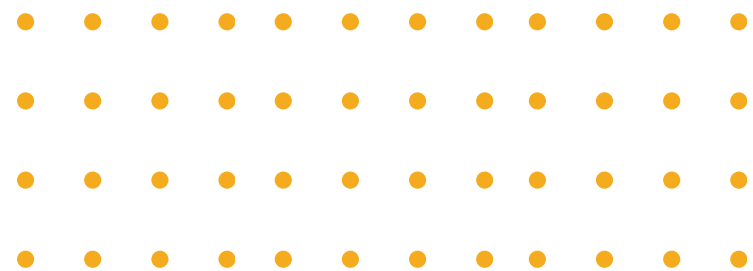




**Mapping Solution that will  
take your business to places**



# Why do businesses need Route Optimization?

The current market scenario.

## CHANGE IN CONSUMER PREFERENCES

The consumer's preferences today have increased emphasis on the speed of delivery. To cater to these wants, businesses have increased the pressure to reach their customer's doors faster than ever before.

## HIGH COMPETITION IN DELIVERY SPACE

As more and more brands are attempting to create localized delivery channels, there is high competition and increased emphasis on the delivery experience provided to the consumer.

## RISING FUEL COSTS

With the risen global fuel costs, delivery operations are now critical to be efficient in order to keep operating costs at a minimum.





# Creating a complete Route Optimization & Mapping Solution.

# Why switch to Mappr?

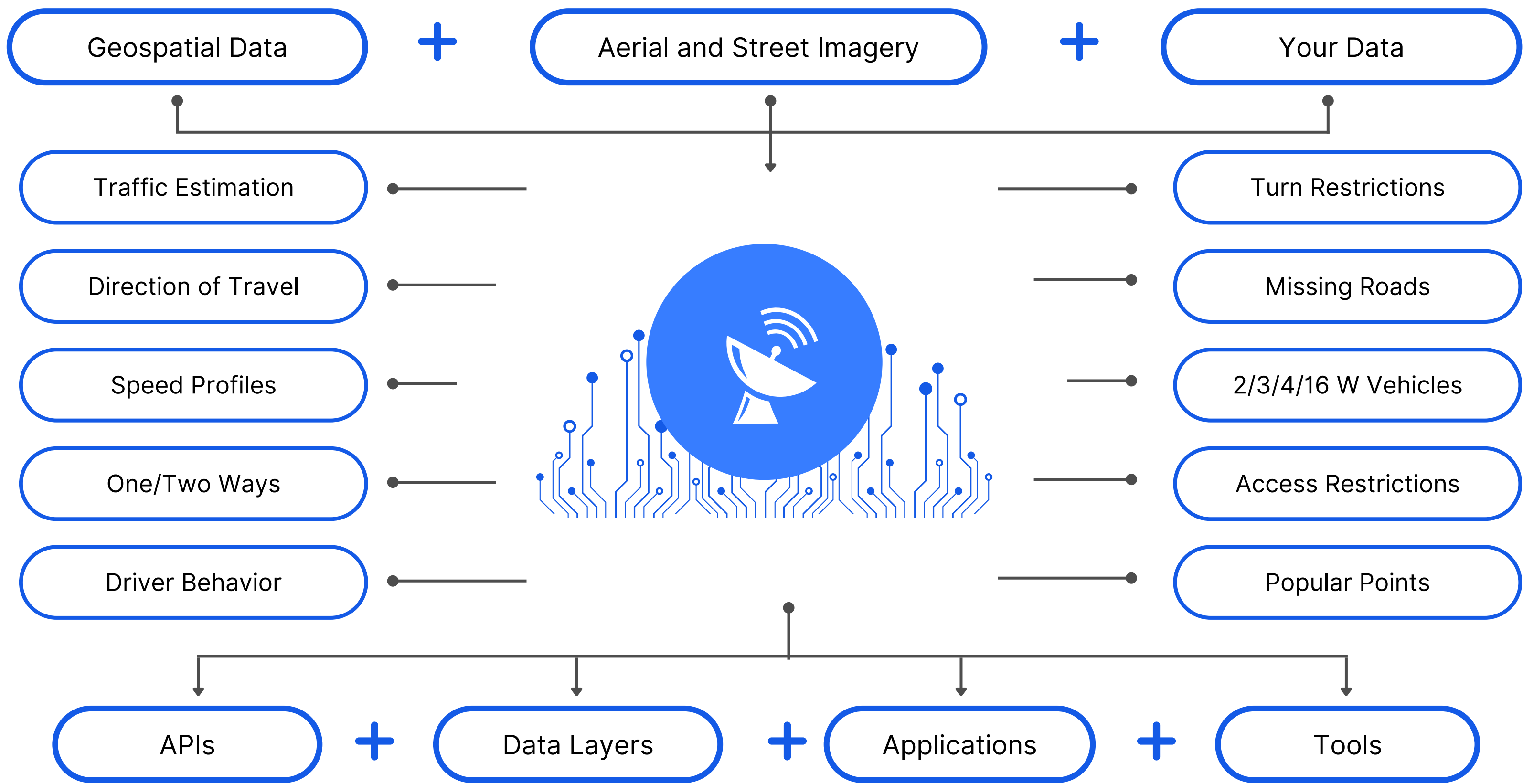
## ROI of Switching

- 01** Makes it easy to show maps, routes, addresses and places, real-time traffic, and more, on any device.
- 02** Customized to your needs, with an API that lets you combine data from any source, in any format, and in any language with our mapping data.
- 03** Build your own custom maps: Uncover insights with user-friendly mapping APIs, SDKs, and tools.
- 04** Get the most out of location data: Improve your search, routing, planning and mapping results with location data, analytics, and insights.
- 05** Enhanced navigation, features and improved driver experience with Static Images API to give users fast and accurate pictures of the spots.

## KPIs

- 80%** Cost savings due to our pricing model, compared to Google
- 40x** More scalable and higher throughput than alternatives
- 98%** ETA accuracy parity with industry leaders
- 98%** Navigation system efficiency courtesy custom map editing capabilities

# Powering location technology for our customers



# Own Your Mapping Stack

Complete ecosystem to enable applications of today



**Enable you to have your own spatial data ecosystem**

Powered by 3rd Party Data + Your Own data



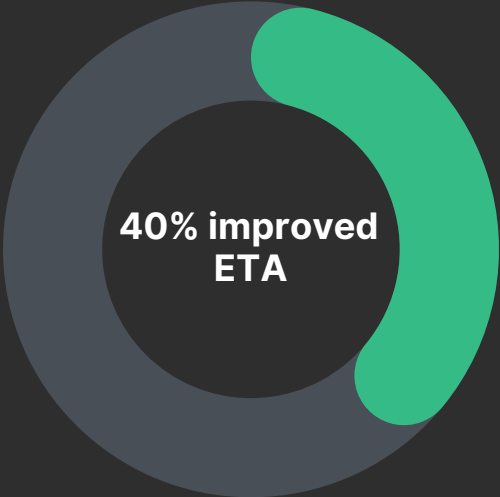
# Reducing costs and increasing efficiency for delivery operations.

## The problem

- Difficulty in streamlining delivery routes.
- Inaccurate estimation of delivery load for fleet management.
- Increasing fuel costs leading to lesser profits.

## The Mappr solution

- Difficulty in streamlining delivery routes.
- Inaccurate estimation of delivery load for fleet management.
- Increasing fuel costs leading to lesser profits.



# One-stop solution for many problems.

Inaccurate **estimation of delivery load** for fleet management.

02

03

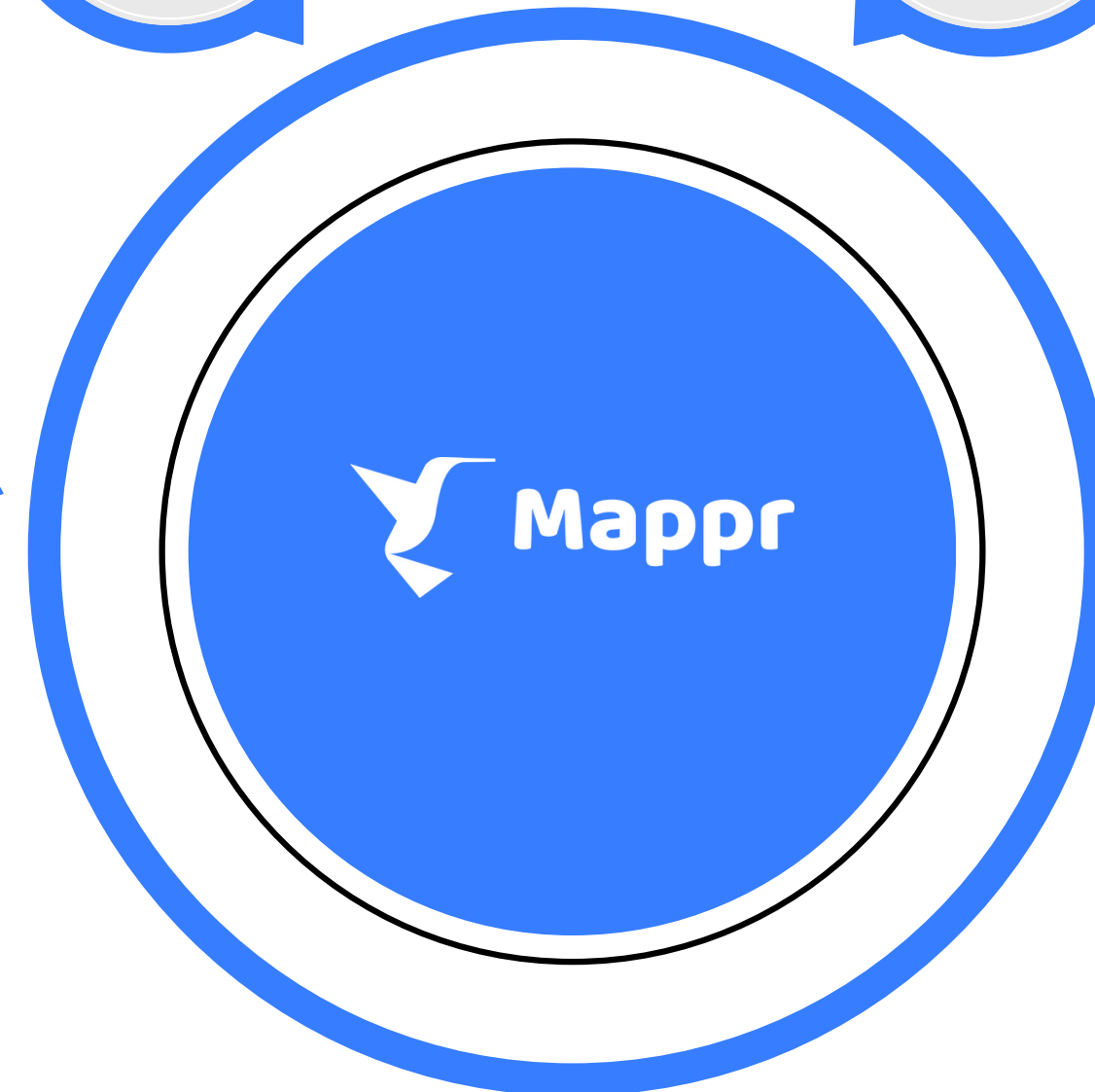
Identifying the the shortest route through **route optimization**.

01

Difficulty in **streamlining delivery routes**.

04

Reducing the impact of rising fuel prices through **increased delivery efficiency**.





## Route Optimization #1

- Map data editing
- Leverage your telemetry and historical data
- Intuitive data management tools
- Integrate map data from multiple sources
- Automated merge and maintenance

## Batch Optimization #3

- Enable unlimited API calls
- On-premise, cloud-agnostic deployment
- Higher throughput, low latency
- Reduce dependency on map providers with decentralized tools

## #2 Manage map data

- Shortest routes for efficient delivery
- Accurate ETAs for smoother delivery
- Vehicle-based routing
- Custom routing metrics
- APIs tailored for your fleet

## #4 Build scalable solution

- Automate asset allotment and batching engine
  - Complex areas' detailed maps, like an apartment, warehouse
- Address/ POI validation and precise geocoding

# Navigation SDKs & APIs

## TRAFFIC-AWARE TRAVEL

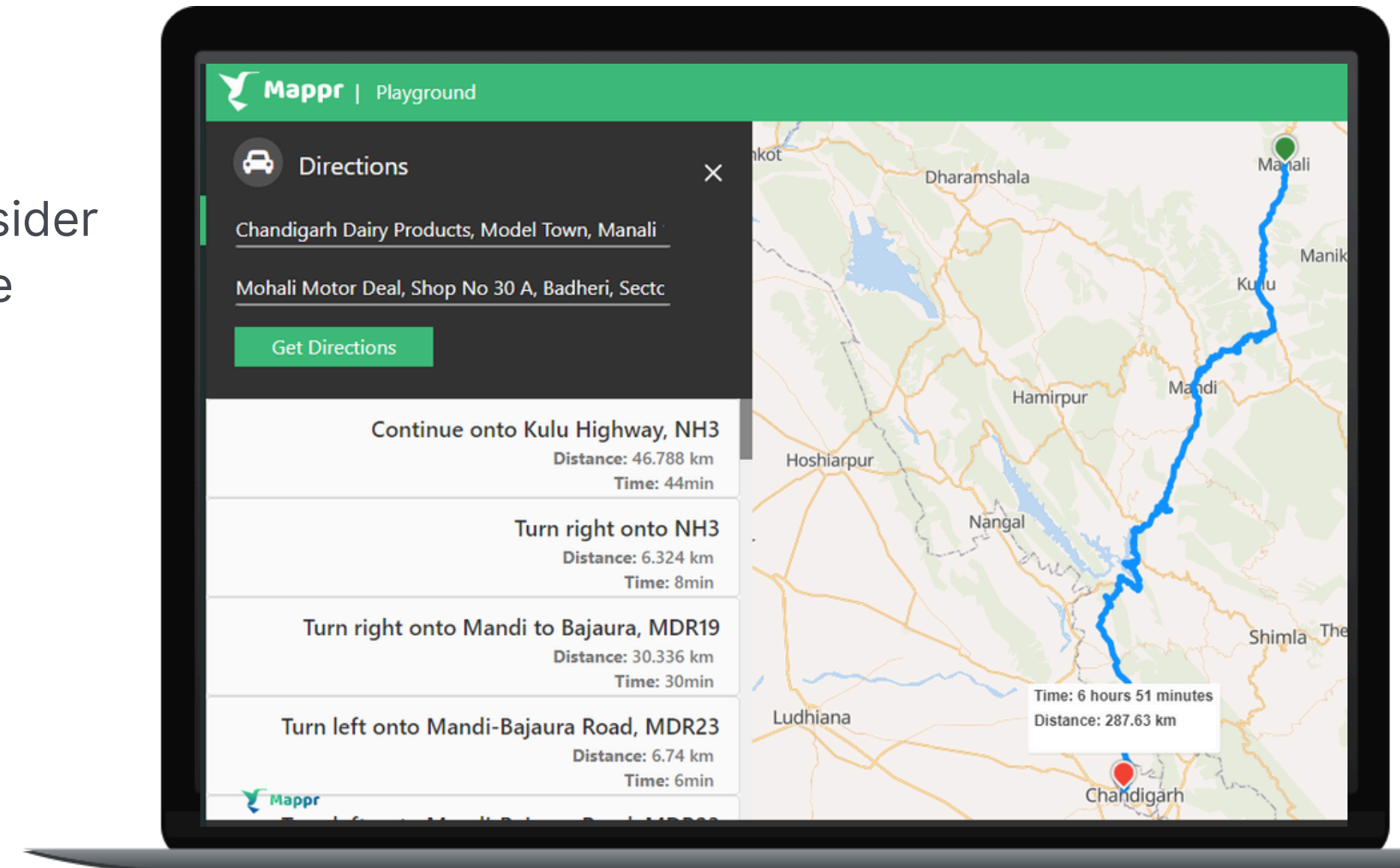
Enrich the modern in-app navigation tech and consider traffic congestion while optimizing tasks to achieve last-mile delivery.

## TURN BY TURN DIRECTIONS

Add traffic-aware turn-by-turn navigation to your app with just a few lines of code.

## CUSTOM & PREDICTIVE ROUTING

Plan your route on the basis of time, distance and route also plan your driver's location to increase your productivity.



# Route Optimization

## VEHICLE BASED OPTIMIZATION

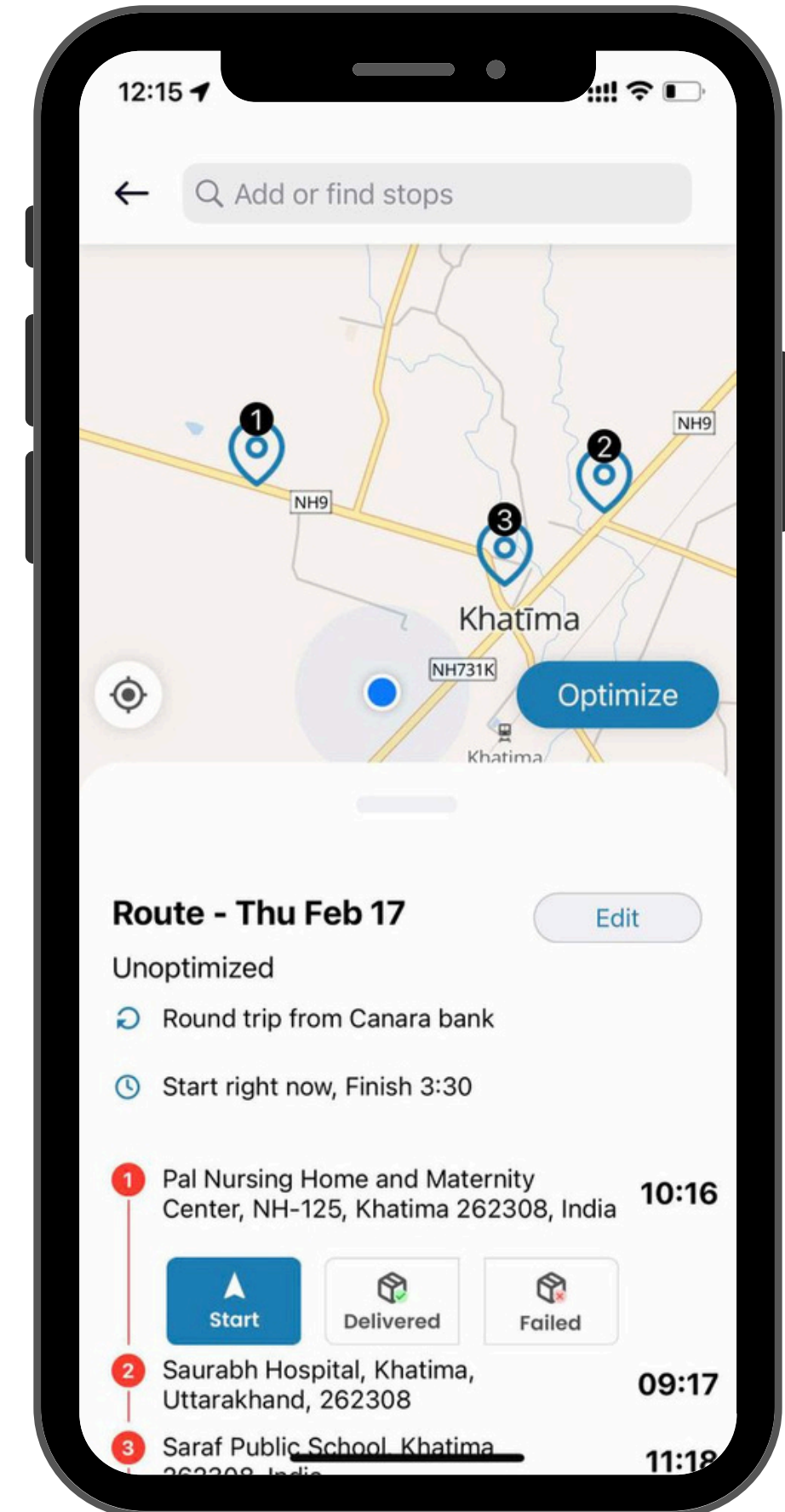
For bikes or cars, map a route and optimize your fleet based on vehicle type taking into account its volume, speed & fuel efficiency.

## MONITOR & MANAGE YOUR ROUTES

Select and plan the routes that you would like to optimize and assign to agents based on their availability and location.

## MULTI-STOP ROUTE PLANNER

Create a single task for single pickup and multiple drop-offs. Plan and optimize your routes for speedy drop-offs.



# Customizable Maps

Design interactive maps that suit your business use case.

## REGULATE YOUR DESIGNS

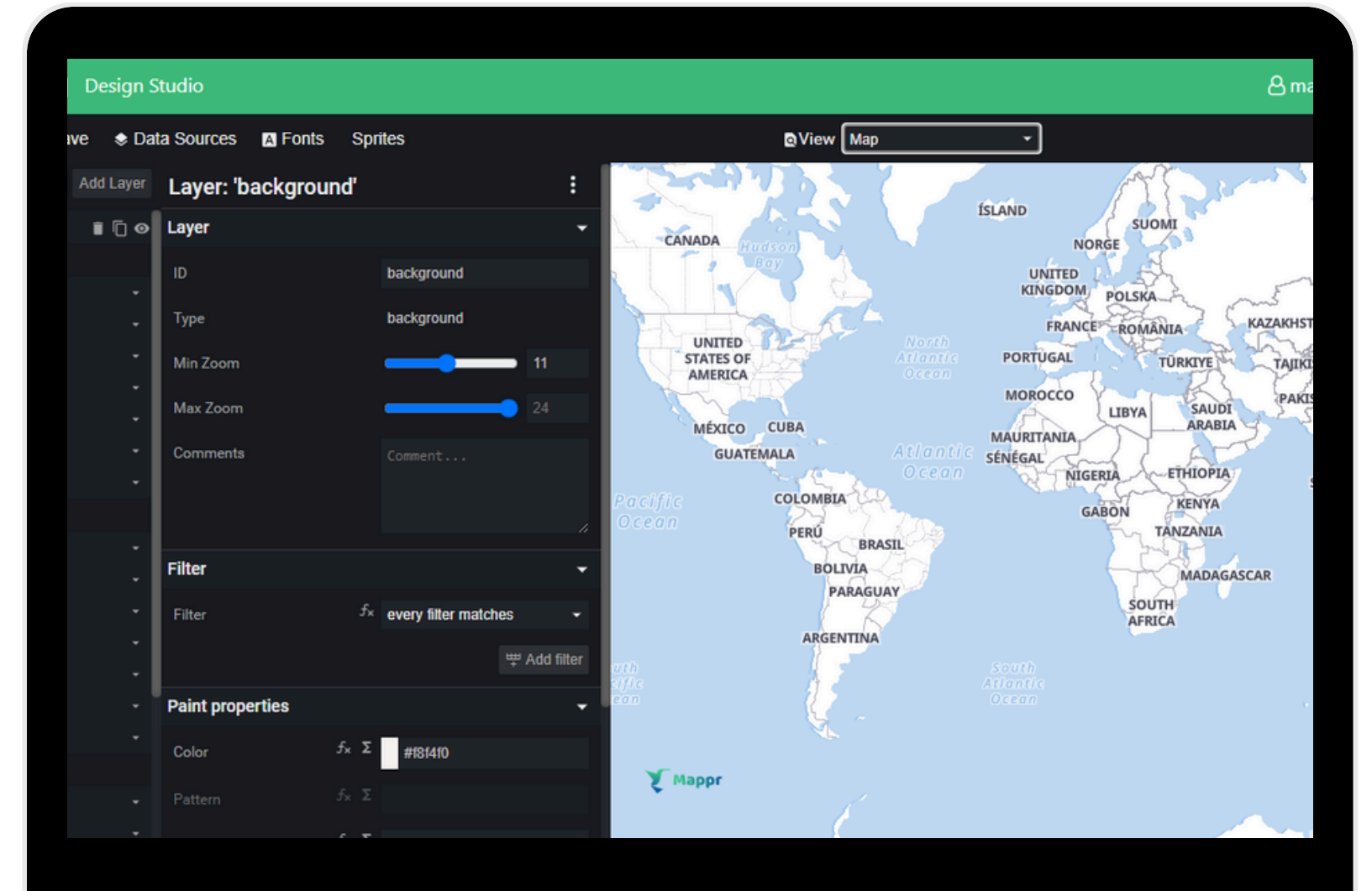
Design every aspect of your map, from adding markers and shapes to defining annotations, from customizing themes to presenting the relevant information on your map.

## HIGHLIGHT RELEVANT ASSETS

Engage your customers by catering to them in 2D & 3D models of buildings, terrains, etc. Tailor your unit metrics for your target audience.






## EDIT ATTRIBUTE DIMENSIONS

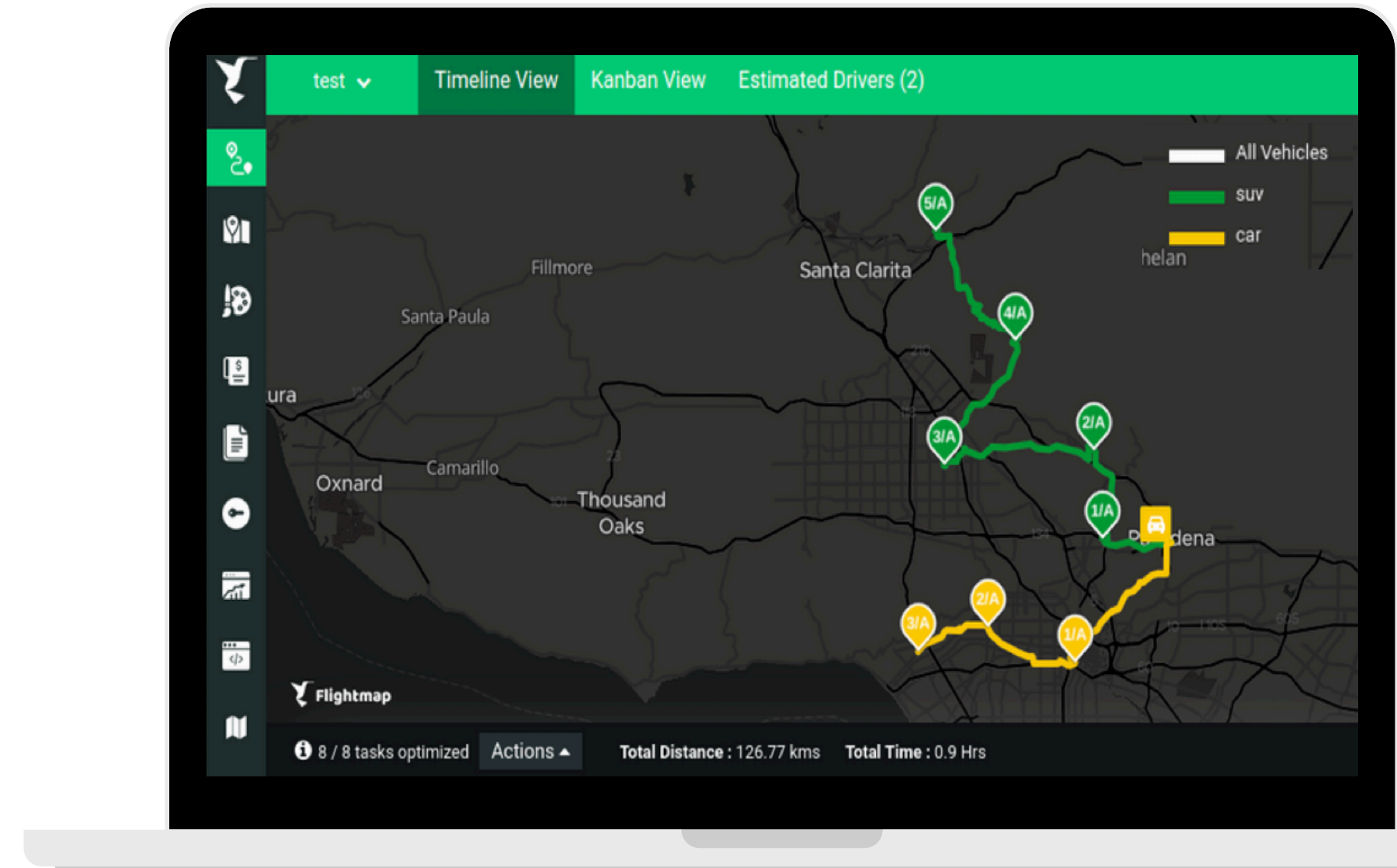
Highlight attributes like roads and lanes with different colors and adjusts width and height. Present a degree of specificity to create user engagement and retention.



# Estimate flow

Calculate the entire man power and man hours for any task, specific to your delivery fleet.

-  Calculate the number of drivers needed to accomplish the task.
-  Plan deliveries according to the number of vehicles.
-  Segregate agents based on vehicle capacity and respective locations.
-  Re-estimate agents to adjust new drivers or changes in the task.
-  Find the total distance and the duration of the entire job.



# How we have empowered businesses in 2024.



Operating in **100+ countries.**

Helping **12,000+ businesses** with Route Optimization.

**Over 150 Million API Transactions per month.**

Optimizing **more than 300,000 stops** per month.

**More than 1720000 KMs** optimized.

That's roughly **43 times** the total circumference of the Earth.



# Success story: A word from our customers.

**Rafaella**

Analyst

Tookan is a good solution for companies wanting to improve their delivery operations. It has the essential features of a pickup and delivery service, including auto allocation and the agent app.

We are having a good experience so far with the commercial support team, very helpful and fast to answer our queries.

**Leon**

Founder

Tookan is very easy to use and has tons of features that you can configure to your specific requirement.

Auto allocation of orders with tracking rider location has been very effective for us when using this platform.

**Justin**

CTO

Tookan has been a great product that is very customizable and functions well under high volume. The templates and settings make it very easy to work with the product to fit your unique use case. Both the dashboard and Agent App function really well, the documentation is great and if you have any questions, support is very responsive.

**Wei**

Consultant

I use Tookan to manage customers' orders and assignment requests. By managing all customer requests online, we are able to be more effective and efficient.

Tookan helps to take in customers' requirements and assignment requests on time and online. The available customization helps in dealing with different customer needs and demands.



# Some of our esteemed clients.





# Thank You

## Do you want to work with us?

### Address

Plot No 10, 1st Floor, IT Park,  
Chandigarh, India

Click Labs Inc, 4830 West  
Kennedy Blvd, Suite 600,  
Tampa Florida 33609, U.S.A

Plot No. 268, Sector 82, JLPL  
Industrial Area, Mohali, Punjab  
- 140308

### Email

[contact@jungleworks.com](mailto:contact@jungleworks.com)

### Website

[www.jungleworks.com/Mappr](http://www.jungleworks.com/Mappr)

